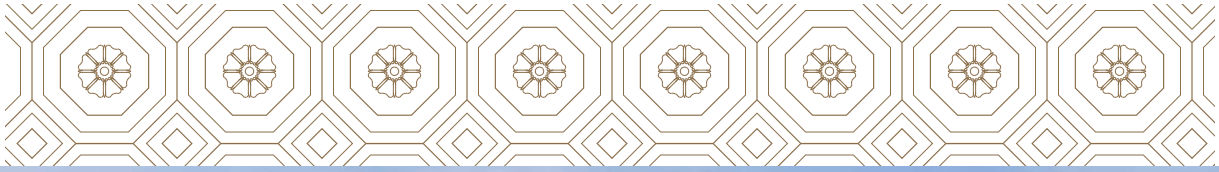


THE PENINSULA

L O N D O N



MEETINGS AND EVENTS

The Peninsula London



Aerial view of The Peninsula London

THE HOTEL

Ideally situated in the heart of Belgravia, with views overlooking Hyde Park Corner and Wellington Arch, The Peninsula London is located at one of the city's most prestigious addresses. The elegant, newly built hotel includes an expansive inner courtyard with off-street access for arriving guests, as well as 30 car parking spaces. Many of London's most iconic attractions, including Buckingham Palace, Harrods, and the Victoria and Albert Museum are just moments away. The hotel welcomes guests with impeccable design and service that reflect the cultural sophistication of its home city.

ACCOMMODATIONS

The Peninsula London's 190 exquisitely styled accommodations consist of 131 guest rooms and 59 suites. Of those 190 rooms, 23 offer spacious and comfortable interconnecting rooms and suites to accommodate family guests. Many feature floor-to-ceiling windows that offer both abundant natural light and dazzling views over London's skyline and all have been designed by architect and designer of the interiors Peter Marino to reflect the distinctive grandeur of Belgravia.

Ultimate stay options include four lavish signature suites: The Palace Suite and The Grand Terrace Suite,

both with large outdoor terraces facing Buckingham Palace and Hyde Park; and The Arch Suite, which has uninterrupted views of Wellington Arch.

The Peninsula Suite, the hotel's most palatial, includes a private screening room and fitness centre, as well as access to exclusive VIP drop-off and pick-up service at the underground car park for optimal privacy and security. The Peninsula Suite can also be interconnected with as many as seven other rooms and suites on the floor to create a sumptuous private apartment-like environment totalling nearly 1,300 square metres (14,000 square feet) – the largest in London.



VENUES THAT IMPRESS AND INSPIRE

The Peninsula London continues a proud tradition of hosting memorable business events and private celebrations, in an environment of unparalleled taste and distinction. A dedicated team helps clients to create bespoke events, ranging in scale from grand galas to intimate gatherings, and enhanced by cutting-edge technology, luxury transport, fine cuisine, and world-renowned service.

CLASSIC SOPHISTICATION, STATE-OF-THE-ART TECHNOLOGY

The Peninsula London offers six meeting rooms, a 15-seat screening room and one grand ballroom to accommodate business conferences, each with its own distinct character and functionality.

All venues are soundproofed, and feature the latest audio-visual capabilities and a dedicated AV support team. Special seating configurations and personalised coffee and meal services can also be arranged.

EXQUISITE FOOD AND BEVERAGE OFFERINGS

The Peninsula London offers lavish business lunches, banquets and dinners to suit all manner of events. Delectable British, International and Cantonese cuisine can be created for every type of event. The acclaimed international culinary team can also accommodate a variety of special requests, including halal and kosher menus.



St. George Ballroom



St. George Ballroom Pre Function Area

VENUES

St. George Ballroom *Elegant • Contemporary*

Occupying a grand space with soaring over 6-metre (20-foot) high ceilings, the St. George Ballroom is a study in understated glamour. Designed by architect and designer of the interiors Peter Marino, its glass chandeliers and wainscot panelling evoke a stately, modern British mansion. Both the ballroom and its adjoining pre-function area can accommodate multiple motorcars each, which, along with the two dedicated large elevators, makes the space suitable for events like car shows and banquets of up to 450 seated guests. Private access points also allow discreet arrival for VIPs.

Wellington Room *Refined • Intimate*

Adjacent to the St. George Ballroom, the Wellington Room is ideal for smaller gatherings.

Its 5-metre (16-foot) ceiling and ambient light fixtures create a fresh, airy atmosphere for business meetings or meals for up to 60 guests; a connecting pre-function space and staircase allow easy access to breakout rooms and other event venues.

Belgrave Room, Chester Room, Eaton Room, Sloane Room *Sophisticated • Adaptable*

Configurable as separate spaces or paired, these four intimate meeting rooms offer refined, wood-panelled comfort. All are furnished with state-of-the-art AV equipment, including flatscreen displays and ceiling speakers for optimal videoconferencing, and can individually accommodate up to 20 guests.





The Cinema



Wilton Room

Private • Bespoke

This stylish, dedicated boardroom, which is equipped with top-of-the-line AV technology and easy access to breakout areas, is perfectly suited for intimate meetings of up to 12 guests.

The Grand Terrace Suite

Exclusive • Semi-alfresco

Featuring a spacious open-air terrace with panoramic views over Belgravia and Hyde Park, this opulent residential-style suite provides a superb setting for intimate gatherings. The Grand Terrace Suite, which also has its

own kitchen and private elevator access, can accommodate 80 guests for cocktail receptions.

The Cinema

Relaxed • Stylish

This plush private screening room provides an exclusive retreat for up to 15 guests. Cutting-edge video and sound technology, including Dolby surround-sound, a 4K, 3-chip DLP cinema projector, and a 200-inch micro-perforated viewing screen, provide an unparalleled viewing experience. Motorised reclining seats, dedicated restrooms, and adjoining refreshment areas offer enhanced comfort.

CAPACITY CHART

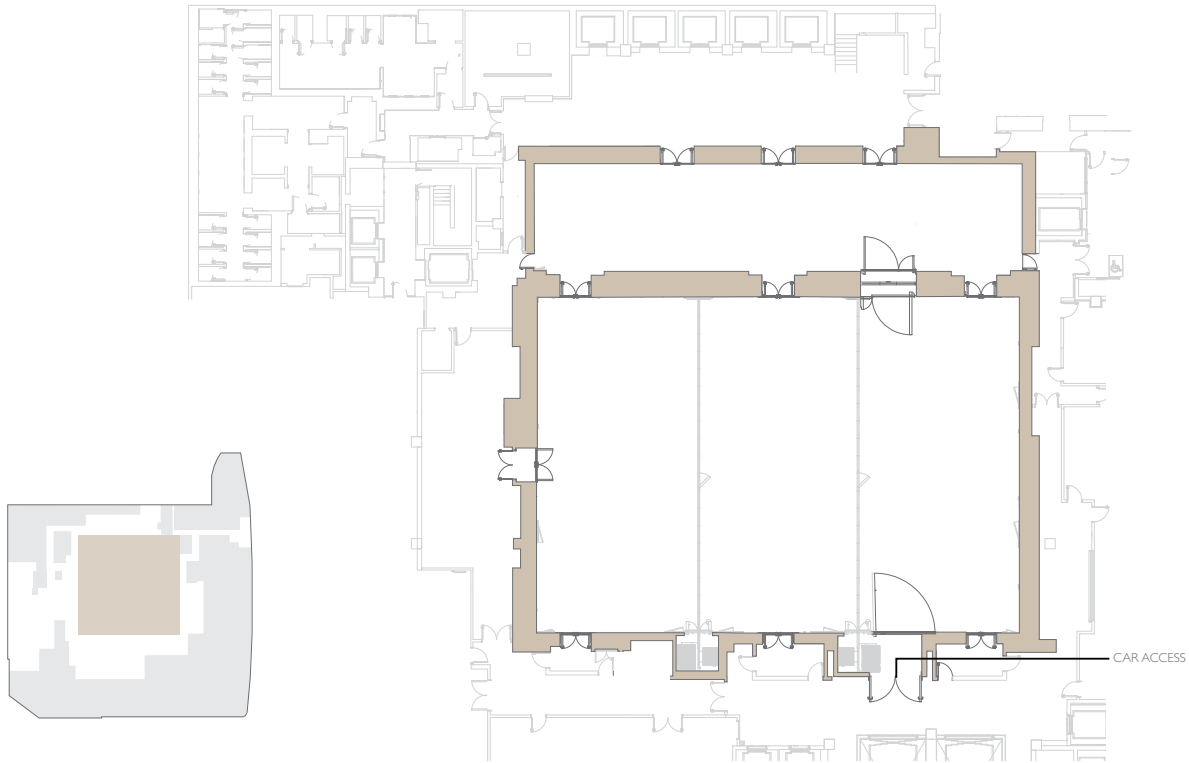
Venue / Location	Area			Capacity					
	Sq M	Sq Ft	Ceiling Height (mm)	Banquet	Cocktail	Theatre	Boardroom	Classroom	U-Shape
Lower Level Four									
St. George Ballroom	696	7492	6140	450	1200	650	100	380	90
Pre-Function St. George Ballroom	217	2336	6000	N/A	450	N/A	N/A	N/A	N/A
Wellington Room	115	1238	5140	60	80	90	64	60	
Pre-Function Wellington Room	33	355	2600	N/A	40	N/A	N/A	N/A	N/A
Lower Level Three									
Belgrave Room	26	280	2470	20	36	25	14	12	15
Chester Room	28	301	2470	20	36	25	14	12	15
Eaton Room	26	280	2470	20	36	25	14	12	15
Sloane Room	28	301	2470	20	36	25	14	12	15
Wilton Room	30	323	2600	N/A	N/A	N/A	12	N/A	N/A
The Cinema	65	700	3060	N/A	N/A	15	N/A	N/A	N/A
Pre-Function The Cinema	50	538	2450	N/A	15	N/A	N/A	N/A	N/A
6th Floor									
The Grand Terrace Suite	583	6275	N/A	50	80	40	30	N/A	N/A











Courtyard

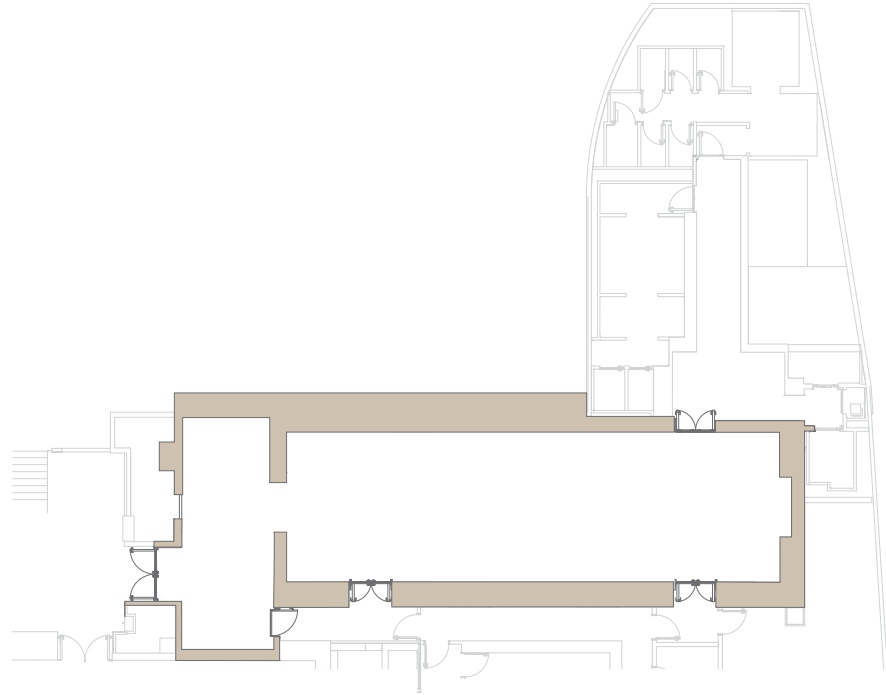
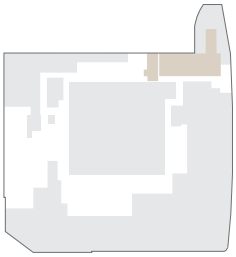
LOWER LEVEL FOUR

ST. GEORGE BALLROOM



LOWER LEVEL FOUR								
ST. GEORGE BALLROOM	AREA 696 sq m 7492 sq ft	BANQUET 450	COCKTAIL 1200	THEATRE 650	CABARET 400	BOARDROOM 100	CLASSROOM 380	U-SHAPE 90
PRE-FUNCTION	217 sq m 2336 sq ft	N/A	230	N/A	N/A	N/A	N/A	N/A

WELLINGTON ROOM



LOWER LEVEL FOUR



WELLINGTON ROOM

AREA
115 sq m
1238 sq ft

BANQUET
60

COCKTAIL
80

THEATRE
90

CABARET
48

BOARDROOM
64

CLASSROOM
60

U-SHAPE
N/A

PRE-FUNCTION

33 sq m
355 sq ft

N/A

40

N/A

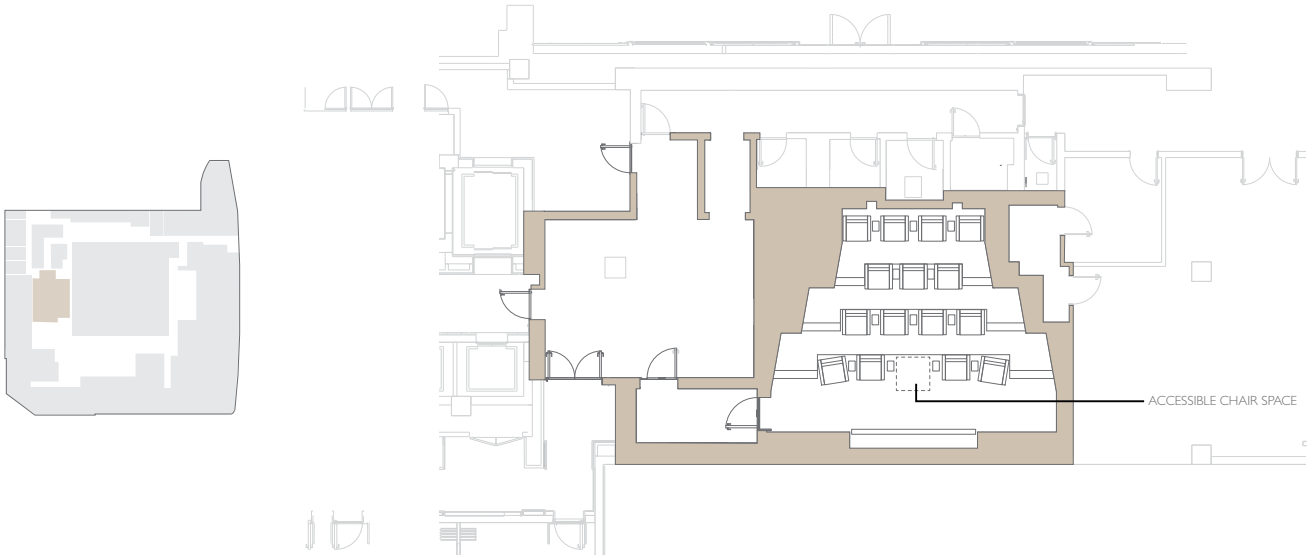
N/A

N/A

N/A

N/A

THE CINEMA



LOWER LEVEL THREE



THE CINEMA

AREA
65 sq m
700 sq ft



BANQUET
N/A



COCKTAIL
N/A



THEATRE
15



CABARET
N/A



BOARDROOM
N/A

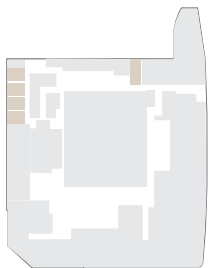
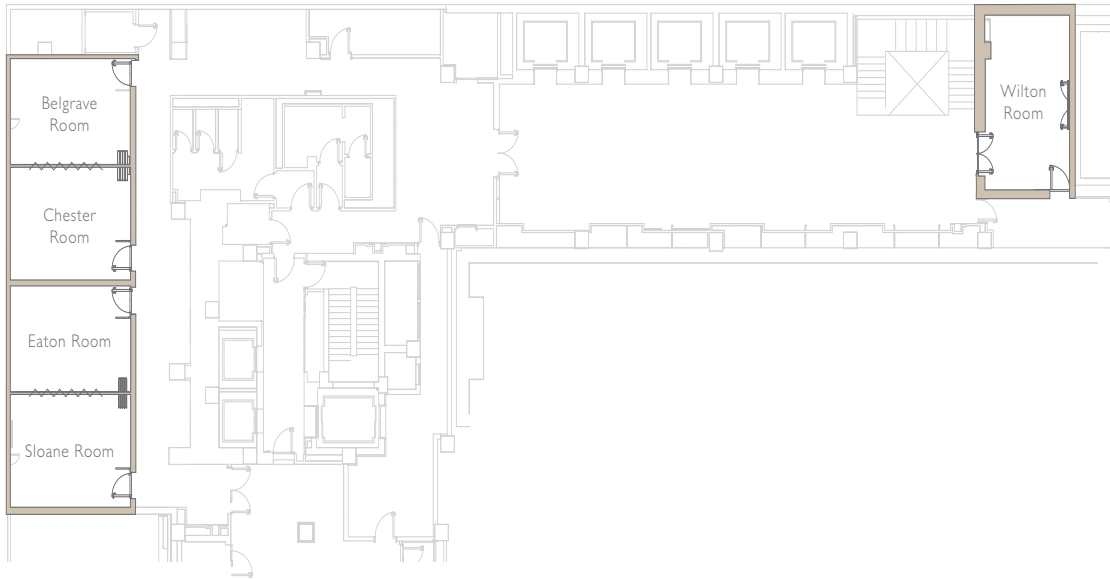










CLASSROOM
N/A



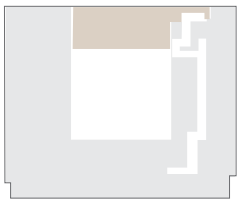
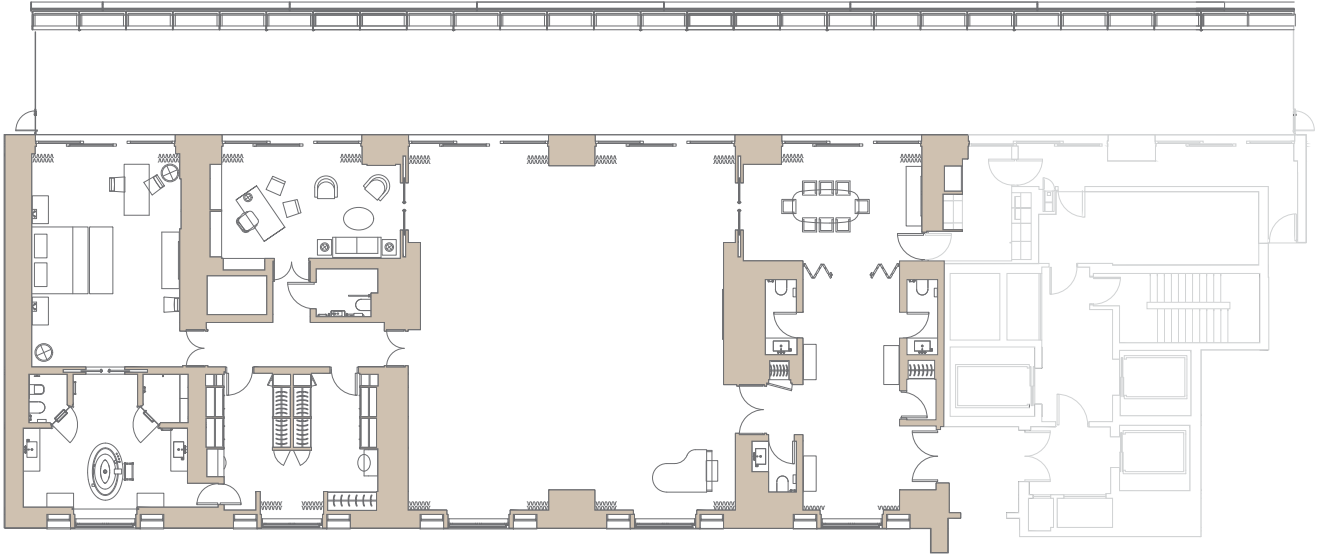
U-SHAPE
N/A

BELGRAVE, CHESTER, EATON, SLOANE & WILTON ROOM



LOWER LEVEL THREE								
	AREA	BANQUET	COCKTAIL	THEATRE	CABARET	BOARDROOM	CLASSROOM	U-SHAPE
BELGRAVE ROOM	26 sq m 280 sq ft	20	36	25	16	14	12	15
CHESTER ROOM	28 sq m 301 sq ft	20	36	25	16	14	12	15
EATON ROOM	26 sq m 280 sq ft	20	36	25	16	14	12	15
SLOANE ROOM	28 sq m 301 sq ft	20	36	25	16	14	12	15
WILTON ROOM	30 sq m 323 sq ft	N/A	N/A	N/A	N/A	12	N/A	N/A

THE GRAND TERRACE SUITE



Sixth Floor

<p>LOWER LEVEL SIX THE GRAND TERRACE SUITE</p>								
<p>AREA 583 sq m 6275 sq ft</p>	<p>BANQUET 50</p>	<p>COCKTAIL 80</p>	<p>THEATRE 40</p>	<p>CABARET 40</p>	<p>BOARDROOM 30</p>	<p>CLASSROOM N/A</p>	<p>U-SHAPE N/A</p>	

Please contact the Sales team at plnevents@peninsula.com for more information.

1 Grosvenor Place, London, SW1X 7HJ, UK
 T: +44 20 3959 2888 F: +44 20 8138 6999 pln@peninsula.com peninsula.com

HONG KONG · SHANGHAI · BEIJING · TOKYO · NEW YORK · CHICAGO · BEVERLY HILLS
 LONDON · PARIS · ISTANBUL · BANGKOK · MANILA