

THE PENINSULA

SHANGHAI



# MEETINGS AND EVENTS

The Peninsula Shanghai





Exterior of The Peninsula Shanghai

## THE HOTEL

Opened on the historic Bund in 2009, The Peninsula Shanghai heralds the return of the company to its roots and is a beacon of luxury hospitality on the city's iconic riverfront promenade. Equipped with extraordinary facilities, world-class services and critically acclaimed Michelin-starred restaurants, The Peninsula Shanghai harmonises effortlessly

exquisite Art Deco-inspired interiors with contemporary comforts. Part of a complex that includes luxury residences, gardens and an opulent shopping arcade, the hotel is both a destination unto itself and a gateway to the rest of the city.

## ACCOMMODATION

The Peninsula Shanghai's 235 elegantly appointed guest rooms include 44 suites, as well as two palatial, ultra-luxurious suites: The 306-square-metre (3,294-square-foot) Palace Suite, whose 1,098-square-metre (12,000-square-foot) wrap-around terrace is the largest on the Bund; and the 400-square-metre (4,305-square-foot) Peninsula Suite, with a working fireplace and private gym.





## **VENUES THAT IMPRESS AND INSPIRE**

At The Peninsula Shanghai, special events become extraordinary and unforgettable occasions. With a collection of opulent and distinctive function spaces, impeccable attention to detail from a dedicated team of event planners, and an array of bespoke services, ranging from luxury transport to cutting-edge conference technology to culinary menus from Michelin-starred chefs, The Peninsula Shanghai ensures that gatherings both grand and intimate make a singular impression.

## **CLASSIC SOPHISTICATION, STATE-OF-THE-ART TECHNOLOGY**

The Peninsula Shanghai offers a variety of sophisticated meeting spaces to accommodate business conferences, each with

its own distinct character and functionality. Enhancements including IT support, special seating configurations, and personalised coffee and meal services allow meetings to proceed seamlessly.

## **EXQUISITE FOOD AND BEVERAGE OFFERINGS**

The Peninsula Shanghai is well known for exceptional food and beverage offerings that can be customised to each event, from banquet menus, buffet stations to themed coffee breaks.



Exquisite Service in The Palace Suite Terrace





The Rose Ballroom

## VENUES

### **The Rose Ballroom** *Elegant • Grandeur*

The Peninsula Shanghai's most spacious venue and one of its most extravagant, with ornate chandeliers and gilded crown moulding that preside above formal banquets, exhibitions, and receptions. The venue is also optimised for business conferences, with high-speed connectivity, discreetly installed audiovisual capabilities, and a dedicated lift large enough to accommodate motor vehicles and large equipment for product launches and themed parties.

### **Changning, Jing An, Xuhui and Luwan Rooms**

*Private • Stylish*

Named after four of the city's most prominent districts, The Peninsula Shanghai's Changning, Jing An, Xuhui and Luwan meeting rooms offer a variety of flexible venue layouts for small conferences and seminars, all furnished with cutting-edge audiovisual technology and inclusive of superlative service. The rooms can each accommodate 18 to 33 guests in a theatre or boardroom-style configuration; some can also be combined to host larger receptions of up to 70 guests.



Xuhui





## STUNNING VISTAS, SUPERLATIVE SERVICE

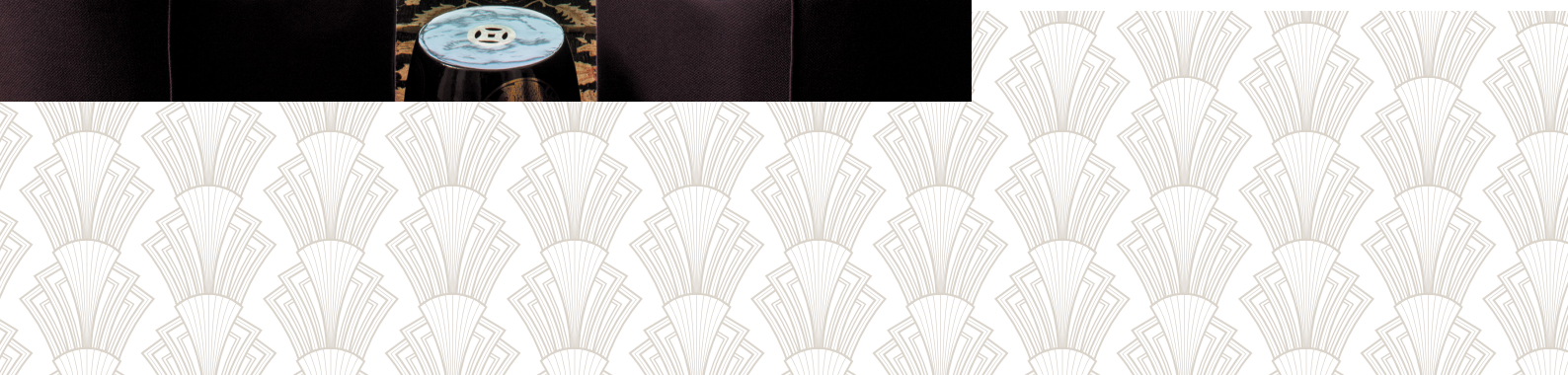
Special event venues at The Peninsula Shanghai include some of the most dazzling alfresco spaces in the city with unparalleled skyline views.

### **The Palace Suite** *Spectacular • Versatile*

Comprising both a grand indoor space and a palatial wrap-around terrace overlooking the Huangpu River, the largest in The Bund district, The Palace Suite offers a dramatic setting for parties and celebrations. Its exclusive kitchen and preparation area accommodate culinary staff from the hotel's Michelin-starred restaurants; and special amenities including a transparent outdoor canopy and an atmospheric indoor fireplace make it suitable for all-weather gatherings.

### **The Rosamonde Aviation Lounge** *Contemporary • Striking*

History and glamour unite at The Peninsula Shanghai's elegant aviation-themed lounge. With spectacular views of the city skyline through floor-to-ceiling windows, this unique venue celebrating the golden age of flight in China provides a striking locale for board meetings and cocktail receptions.





Sir Elly's Terrace

**Sir Elly's Restaurant and Terrace**  
*Breathtaking • Remarkable*

The grand Sir Elly's Terrace provides a 270-degree evening experience with magnificent panoramas of the Huangpu River, Suzhou Creek and Pudong skyline. It is a popular alfresco place for organising cocktail reception, brand parties or post-dinner celebrations. The restaurant also provides private dining rooms which are suitable to host small executive meetings plus private lunches or dinners. Large windows overlook the former British Consulate, Garden Bridge and Suzhou Creek and a direct access to the outdoor terrace of the 14th floor.

**Majestic Suite**  
*Exquisite • Splendid*

The height of luxury and an ideal venue for hosting executive meetings, private events with residential set-up or as the hospitality suite for exceptional incentives. The Majestic Suite measures 250 square metres (2,690 square feet) features a spacious, two-storey grand living room with a private balcony, offers breathtaking views along the Bund and the Huangpu River.





## CAPACITY CHART

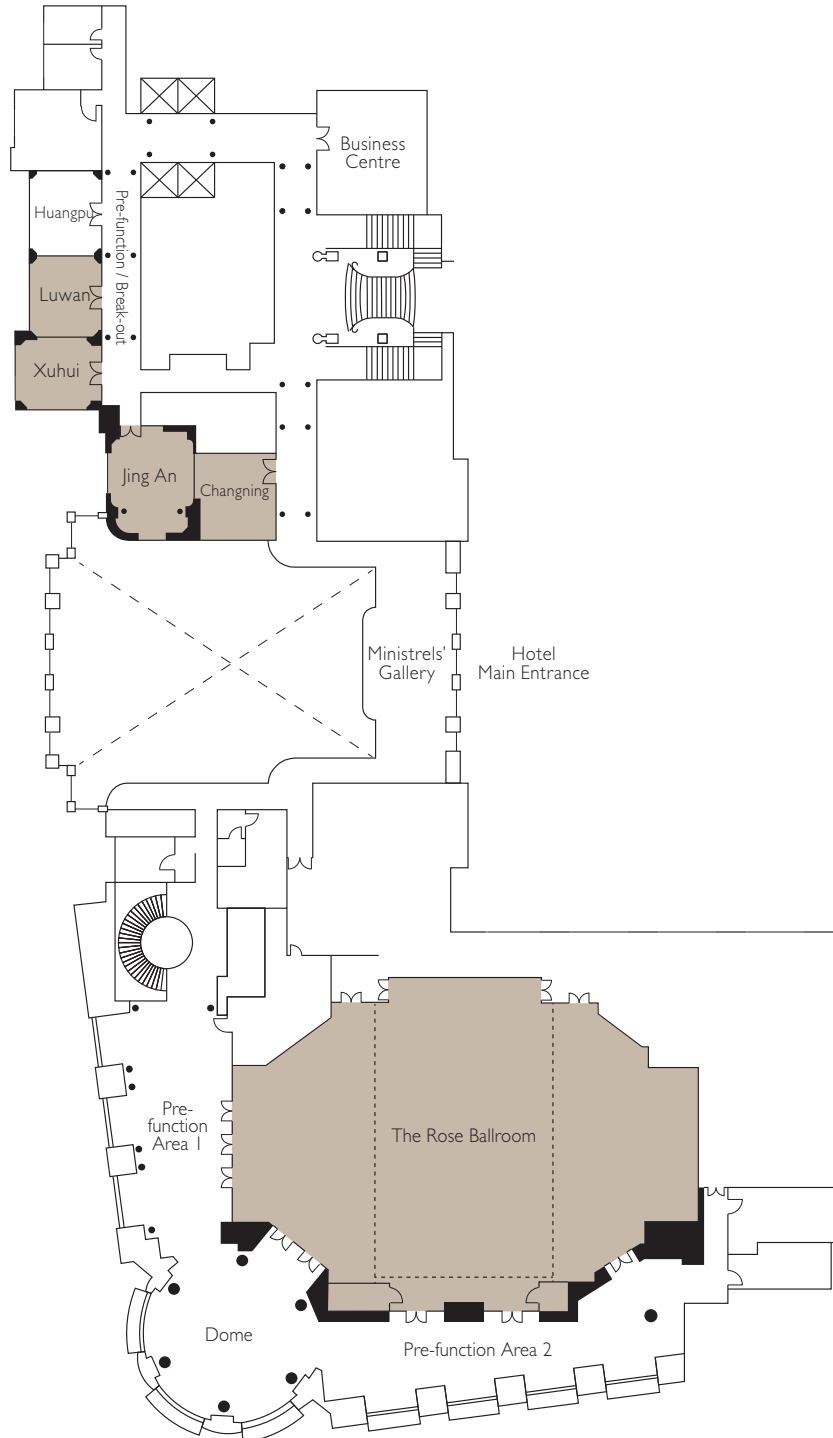
Venue / Location	Area		Capacity					
	Sq M	Sq Ft	Banquet	Cocktail	Theatre	Boardroom	Classroom	U-Shape
<b>2nd Floor</b>								
The Rose Ballroom	742	7987	430	750	550	114	300	96
Changning	40	431	11	30	30	18	18	14
Jing An	46	495	11	40	33	18	18	14
Xuhui	33	355	11	30	21	18	18	14
Luwan	34	366	11	30	24	18	18	14
<b>11th Floor</b>								
The Palace Suite	1404	15294	110	200	130	49	60	42
<b>14th Floor</b>								
The Rosamonde Aviation Lounge	120	1292	24	60	60	24	26	22



The Rosamonde Aviation Lounge

# FLOOR PLANS

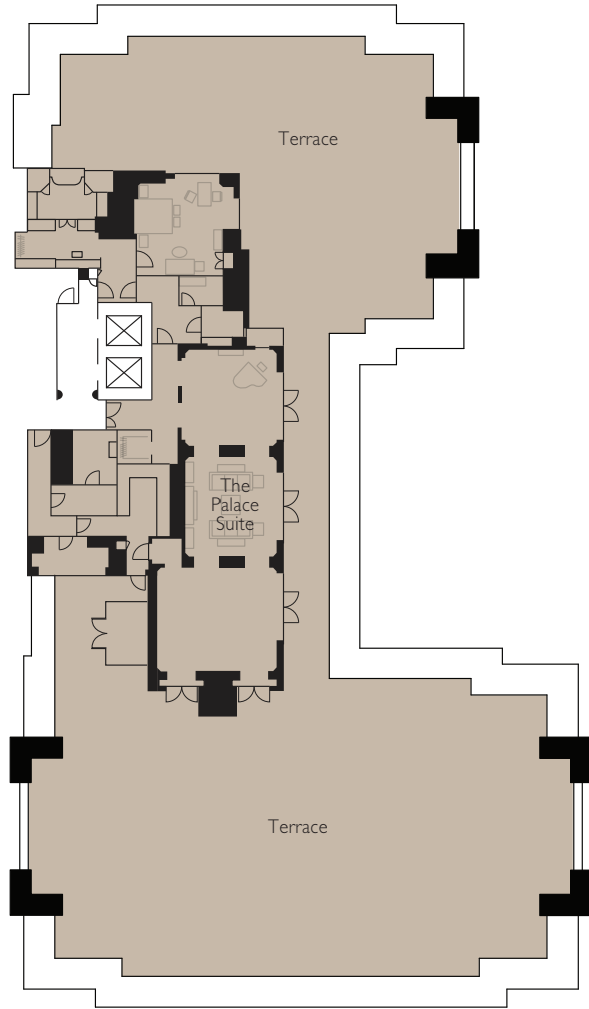
## SECOND FLOOR





# FLOOR PLANS

## ELEVENTH FLOOR



## FOURTEENTH FLOOR





The Peninsula Yacht

**UNIQUE LOCAL EXPERIENCES: DISCOVER THE SIGHTS, FLAVOURS, AND TRADITIONS OF SHANGHAI**

The Peninsula Shanghai welcomes the opportunity to introduce event and meeting guests to the highlights of its home city. These can be experienced with an array of bespoke excursions and tours.

**THE PENINSULA YACHT**

Private tours and excursions aboard The Peninsula Shanghai's Azimut 47 yacht allow guests to take in the iconic skyline and dramatic waterways of China's largest metropolis in classic Peninsula luxury. Bespoke services can be arranged for yachting parties, including sunset cocktails, catered menus and on-board spa services.

**THE PENINSULA ACADEMY**

Through a series of workshops, private tours, and programmes that explore the traditions and culture of Shanghai, The Peninsula Academy invites guests to explore distinctive aspects of the city's artistic, gastronomic and modern lifestyle. Highlights of the programmes include:

- *Shanghai Auto Museum Tour*  
The Peninsula Shanghai brings the thrill and excitement of automobile history up close with the China Motor City experience. The journey begins with a chauffeured ride in a Mercedes Sprinter to the Shanghai Auto Museum, which is close to the Shanghai International Circuit, home of the F1 Chinese Grand Prix. On arrival, guests will enjoy a private tour with the curator of the first automobile museum in China. Afterwards, guests will return to the VIP Lounge to enjoy a

gourmet lunch box prepared by a Michelin-starred chef at The Peninsula Shanghai.

- *Art of The Century*  
Chinese contemporary art has taken the global art market by storm, with collectors snapping up works by established and emerging artists who deconstruct the cultural and societal complexities of today's China. The Art of the Century experience provides educated insights into the history and ongoing development of contemporary Chinese painting, sculpture and installation art. An experienced art expert will provide a private tour of The Peninsula Shanghai's own art collection, and take guests into the heart of the city's thriving arts scene to visit its most prestigious galleries and art museums. Private art viewings are also offered upon request.

Please contact the MICE Specialist, Cenci Chen at [cencichen@peninsula.com](mailto:cencichen@peninsula.com) for more information.

No. 32 The Bund , 32 Zhongshan Dong Yi Road , Shanghai 200002 , The People's Republic of China  
T: +86 21 2327 2888 F: +86 21 2327 2000 [psh@peninsula.com](mailto:psh@peninsula.com) [peninsula.com](http://peninsula.com)

HONG KONG • SHANGHAI • BEIJING • TOKYO • NEW YORK • CHICAGO • BEVERLY HILLS  
LONDON • PARIS • ISTANBUL • BANGKOK • MANILA