

THE PENINSULA

B A N G K O K

Introduction



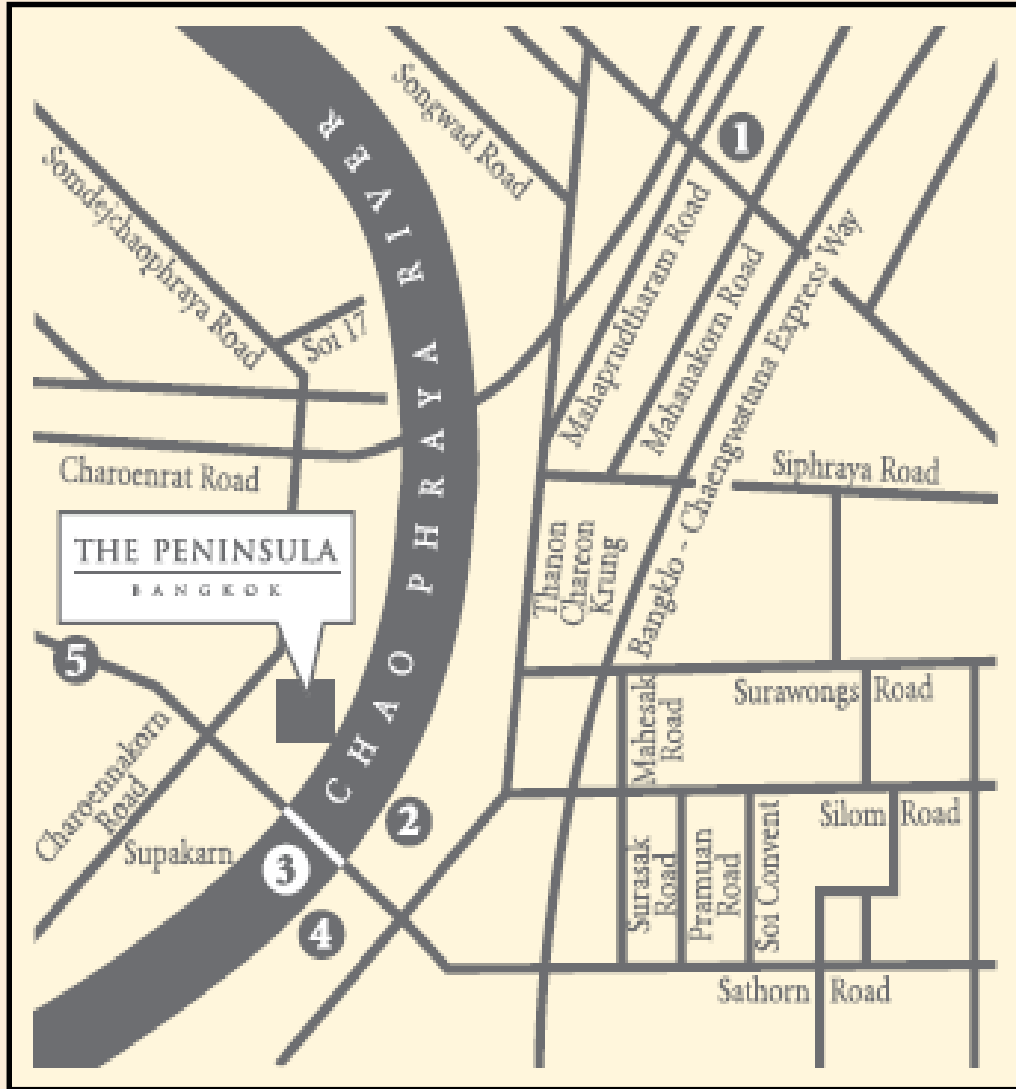
Developed as one of the finest hotels in Bangkok and complete with a riverside location which inspired the wave-shaped design, The Peninsula Bangkok offers panoramic views from every room.

The hotel adds a distinctive architectural statement to the Bangkok skyline and guarantees luxurious comfort, sophisticated facilities, extraordinary dining options and the legendary Peninsula service.



THE PENINSULA

B A N G K O K



Location

ADDRESS : The Peninsula Bangkok
333 Charoennakorn Road, Klongsan, Bangkok
10600, Thailand

TELEPHONE : +66 2 020 2888

AIRPORT DISTANCE : 39 km (24 miles) from Suvarnabhumi Airport
/ 33 km (20 miles) from Don Muang Airport

NEARBY : Asiatique Night Market, Siam Paragon,
Central World Shopping Centre, The Grand
Palace

1. Hua Lamphong Railway Station
2. The Peninsula Pier
3. Taksin Bridge
4. Saphan Taksin BTS Station
5. Krung Thon Buri BTS Station

THE PENINSULA

B A N G K O K

Transportation



BMW
Rolls Royce
Peninsula Tuk-tuk



Helicopter Service

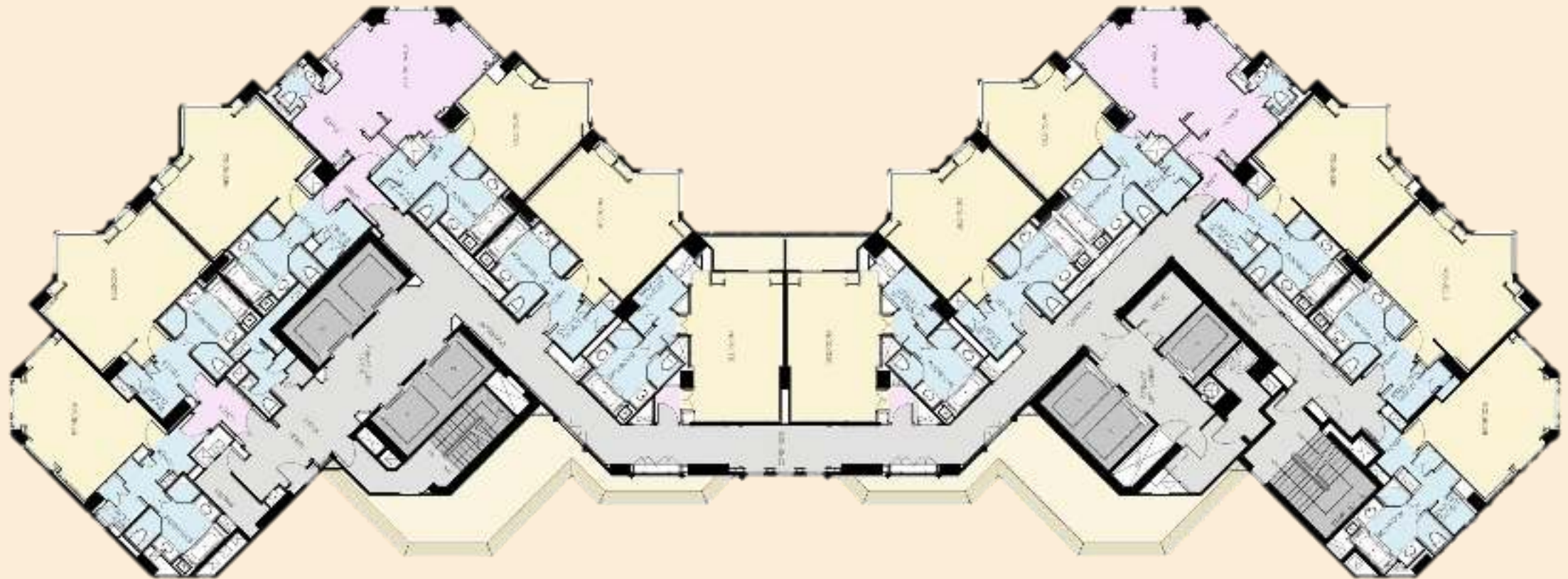


On call
Peninsula Boat
6 am – midnight
Complimentary

THE PENINSULA

B A N G K O K

Guest Room Floor Plan



Deluxe Room & Grand Deluxe Room



ROOM SIZE: 46 sq m / 495 sq ft

BEDS: King or Twin Beds

OCCUPANCY: Maximum of 3 Guests (Adult/Children)

FLOOR (Deluxe Room): 4/F - 25/F

FLOOR (Grand Deluxe room): 26/F - 35/F

VIEW: River View & City Skyline

Unique Features:

- View overlooking the Chao Phraya River and Bangkok skyline
- Separate walk-in closet area with luggage bench and dressing table
- Spacious sitting area with sofa, coffee table and executive work desk

Grand Balcony Room



ROOM SIZE: 45 sq m / 484 sq ft

BEDS: King or Twin Beds

OCCUPANCY: Maximum of 2 Guests

FLOOR: 4/F – 35/F

VIEW: River View & City Skyline

Unique Features:

- View overlooking the Chao Phraya River and Bangkok skyline
- Separate walk-in closet area with luggage bench and dressing table
- Spacious sitting area with sofa, coffee table and executive work desk

Deluxe Suite & Grand Deluxe Suite



ROOM SIZE: 74 sq m / 796 sq ft

BEDS: King or Twin Beds

OCCUPANCY: Maximum of 3 Guests (Adult/Children)

FLOOR (Deluxe Suite): 4/F – 25/F

FLOOR (Grand Deluxe Suite): 26/F – 35/F

VIEW: River View & City Skyline

Unique Features:

- Panoramic view of the Chao Phraya River and Bangkok skyline
- Spacious sitting and dining areas with sofa, coffee table, dining table for 4 persons and executive work desk
- Separate walk-in closet area with luggage bench and dressing table

THE PENINSULA

B A N G K O K

Deluxe Suite & Grand Deluxe Suite Floor Plan



Thai Suite



ROOM SIZE: 150 sq m / 1,614 sq ft

BEDS: Super King-size bed

OCCUPANCY: Maximum of 3 Guests (Adult/Children)

FLOOR: 36/F

VIEW: River View & City Skyline

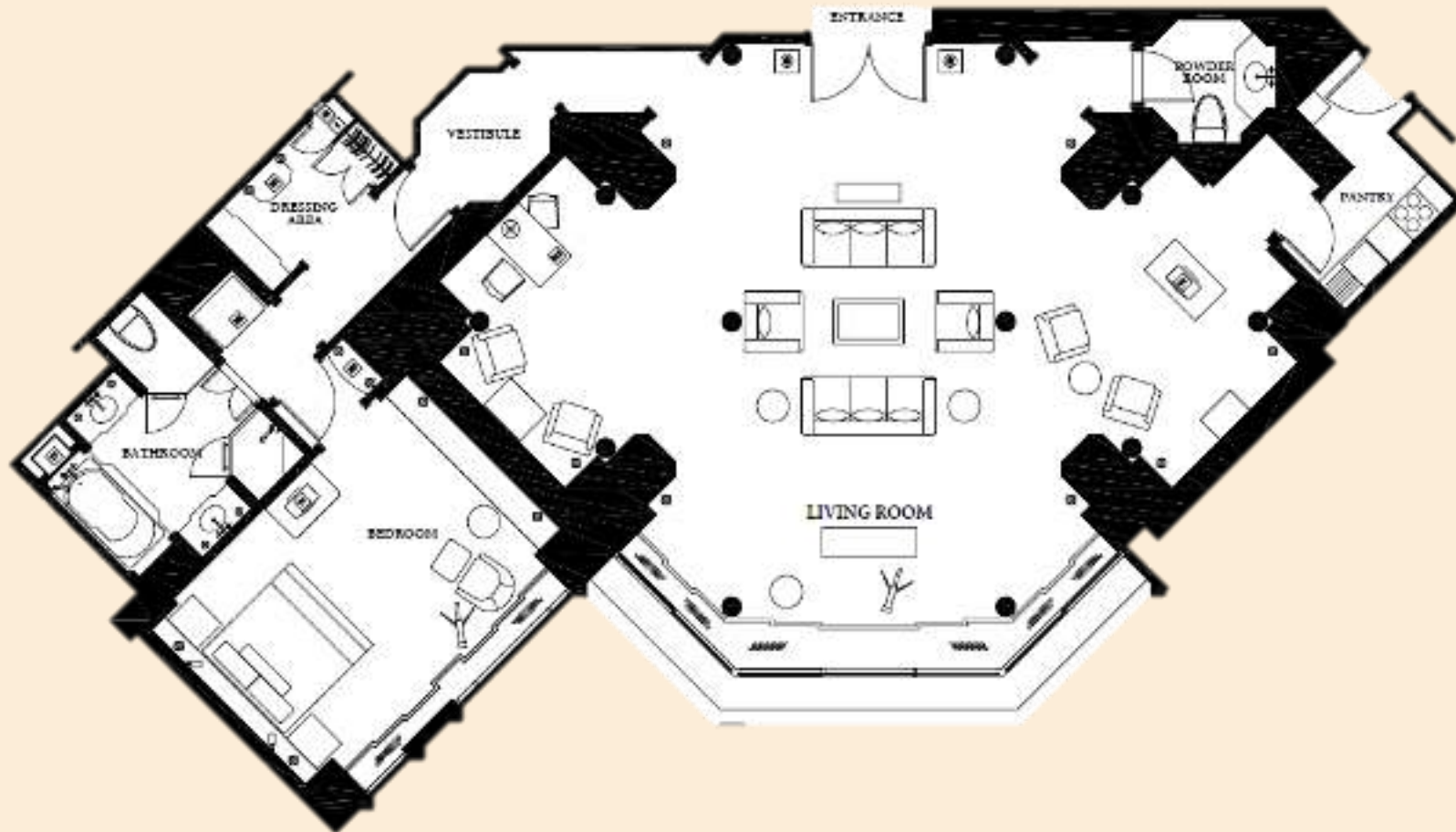
Unique Features:

- 24 hours butler
- Round trip to airport with BMW series 7
- Fast track immigration at the airport
- Free laundry services during stay
- Spacious sitting area furnished with Thai furniture
- Pantry room for private dining preparation
- Separate walk-in closet area with luggage bench and dressing table

THE PENINSULA

B A N G K O K

Thai Suite Floor Plan



Terrace Suite



ROOM SIZE: 190 sq m / 2,045 sq ft

BEDS: Super King-size bed

OCCUPANCY: Maximum of 3 Guests (Adult/Children)

FLOOR: 37/F

VIEW: River View & City Skyline

Unique Features:

- 24 hours butler
- Round trip to airport with BMW series 7
- Fast track immigration at the airport
- Free laundry services during stay
- Spacious terrace with sundeck and private whirlpool and outdoor dining table for four
- Pantry room for private dining preparation
- Dining room or boardroom seating for up to four people
- Luxurious marble bathroom with whirlpool

Grand Terrace Suite



ROOM SIZE: 240 sq m / 2,583 sq ft

BEDS: Super King and Queen-size Twin Beds

OCCUPANCY: Maximum of 4 Guests (Adult/Children)

FLOOR: 36/F

VIEW: River View & City Skyline

Unique Features:

- 24 hours butler
- Round trip to airport with BMW series 7
- Fast track immigration at the airport
- Free laundry services during stay
- Spacious terrace with sundeck and private whirlpool
- Pantry room for private dining preparation
- Dining room or boardroom seating for up to eight people
- Separate walk-in closet area with luggage bench and dressing table
- Luxurious marble bathroom with whirlpool

Duplex Suite



ROOM SIZE: 330 sq m / 3,552 sq ft

BEDS: Super King and Queen-size Twin Beds

OCCUPANCY: Maximum of 4 Guests (Adult/Children)

FLOOR : 36/F - 37/F

VIEW: River View & City Skyline

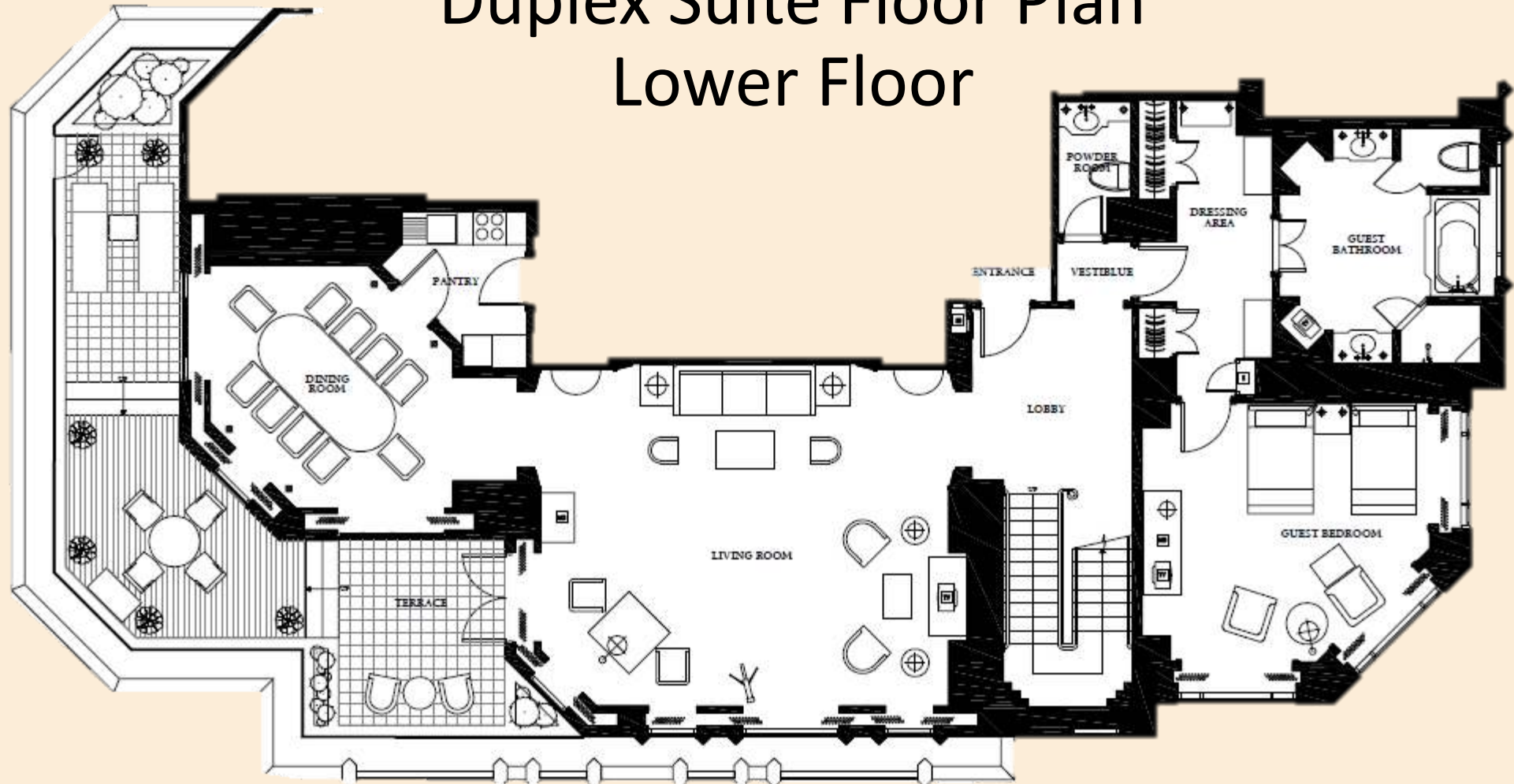
Unique Features:

- 24 hours butler
- Round trip to airport with BMW series 7
- Fast track immigration at the airport
- Free laundry services during stay
- Two spacious terraces with sundeck and a private whirlpool
- Two Bedrooms Suite
- Pantry room for private dining preparation
- Dining room or boardroom seating for up to eight people
- Luxurious marble bathroom with whirlpool

THE PENINSULA

B A N G K O K

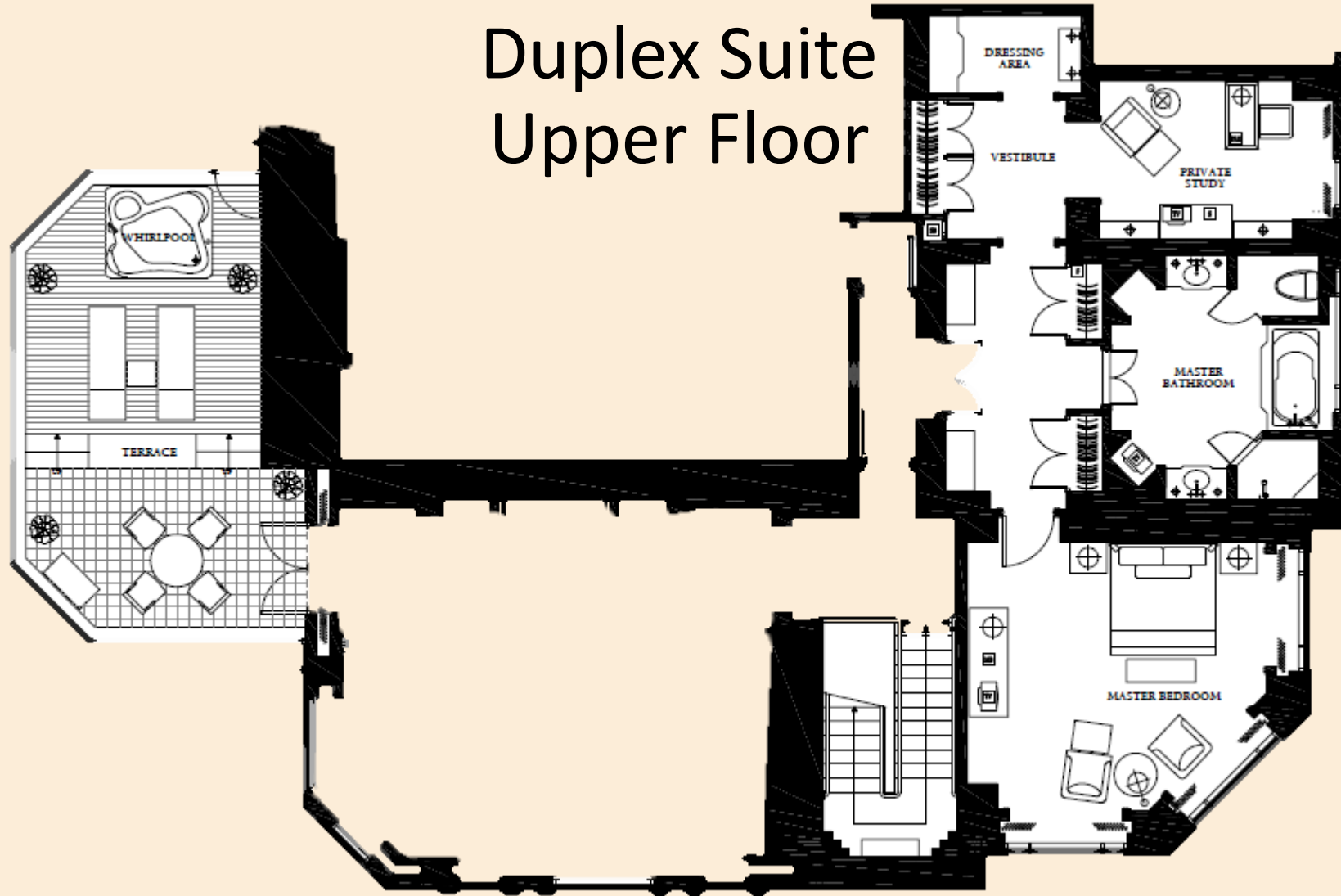
Duplex Suite Floor Plan Lower Floor



THE PENINSULA

BANGKOK

Duplex Suite Upper Floor



The Peninsula Suite



ROOM SIZE: 364 sq m / 3,918 sq ft

BEDS: Super King and Queen-size Twin Beds

OCCUPANCY: Maximum of 4 Guests (Adult/Children)

FLOOR : 34/F

VIEW: River View & City Skyline

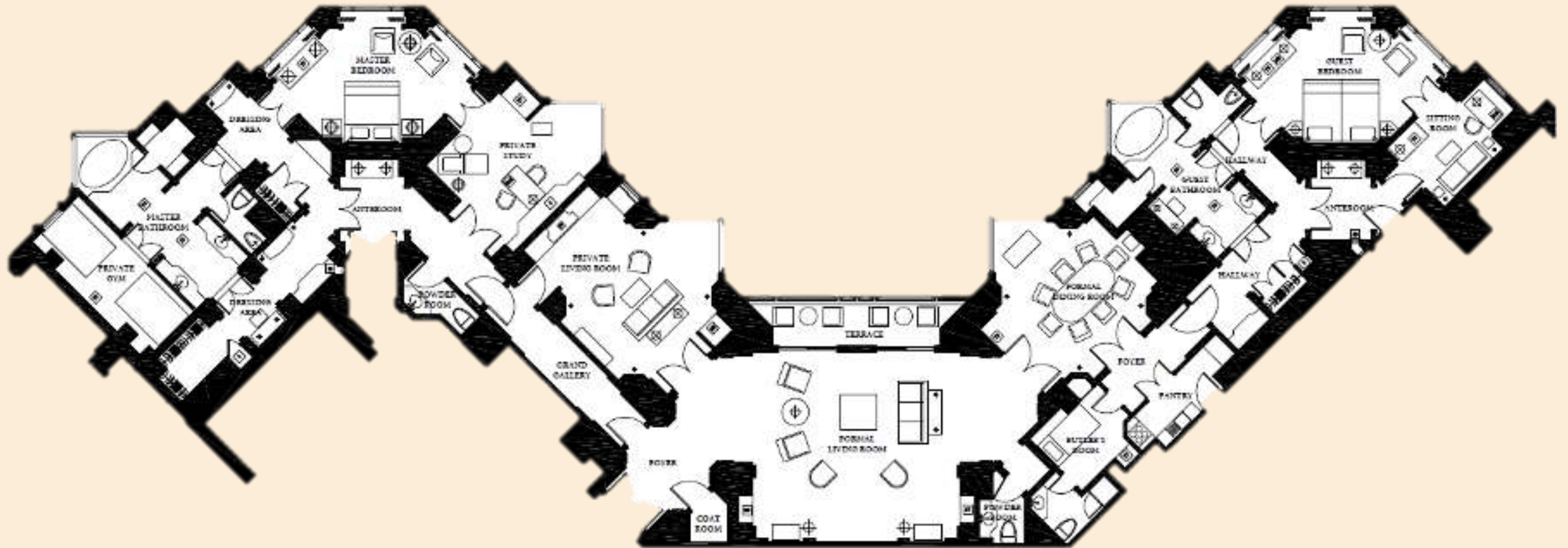
Unique Features:

- 24 hours butler
- Round trip to airport with BMW series 7
- Fast track immigration at the airport
- Free laundry services during stay
- Grand living room/TV lounge with spacious living area
- Cloakroom located near the main entrance and Butler's room
- Dining room or boardroom seating up to ten people
- Pantry room for private dining preparation
- Two Bedrooms Suite
- Private study room
- Fitness area with free weights
- Two Luxurious marble bathrooms with whirlpool

THE PENINSULA

B A N G K O K

The Peninsula Suite Floor Plan



Unique Dining Experiences

THE PENINSULA

B A N G K O K

湄江
MEI JIANG



Cuisine Type: Cantonese
Location: Garden Level

Hours

Lunch : 11:30 am - 2:30 pm
Dinner : 6:00 pm - 10:30 pm



THE PENINSULA

B A N G K O K



Cuisine Type: Thai
Location: Garden Level

Hours
6:00 pm - 10:30 pm
Dress Code: Smart Casual



THE PENINSULA

BANGKOK

The Lobby



Cuisine Type: International All-Day Dining
Location: Ground Level

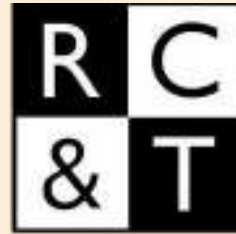
Hours

Breakfast: 6:30 am - 11:00 am
Lunch: 11:00 am - 6:00 pm
Afternoon Tea: 2:00 pm - 6:00 pm
Dinner: 6:00 pm - 10:30 pm
Drinks: Until 12:00 midnight



THE PENINSULA

B A N G K O K



RIVER CAFE & TERRACE



Cuisine Type: International
Location: Garden Level

Hours

Breakfast: 6:00 am - 10:30 am

Lunch: 12:30 pm - 3:00 pm

Dinner: 6:00 pm - 10:30 pm



THE PENINSULA

B A N G K O K

POOL



Location
Garden Level

Hours
6:00 am - 9:00 pm

Enquiries
+66 2 020 2888 Ext 6939
poolpbk@peninsula.com



THE PENINSULA

B A N G K O K

SPA THE PENINSULA



Location

Garden Level

Hours

9:00 am - 11:00 pm

Appointment & Enquiries

+66 2 626 1946

spapbk@peninsula.com



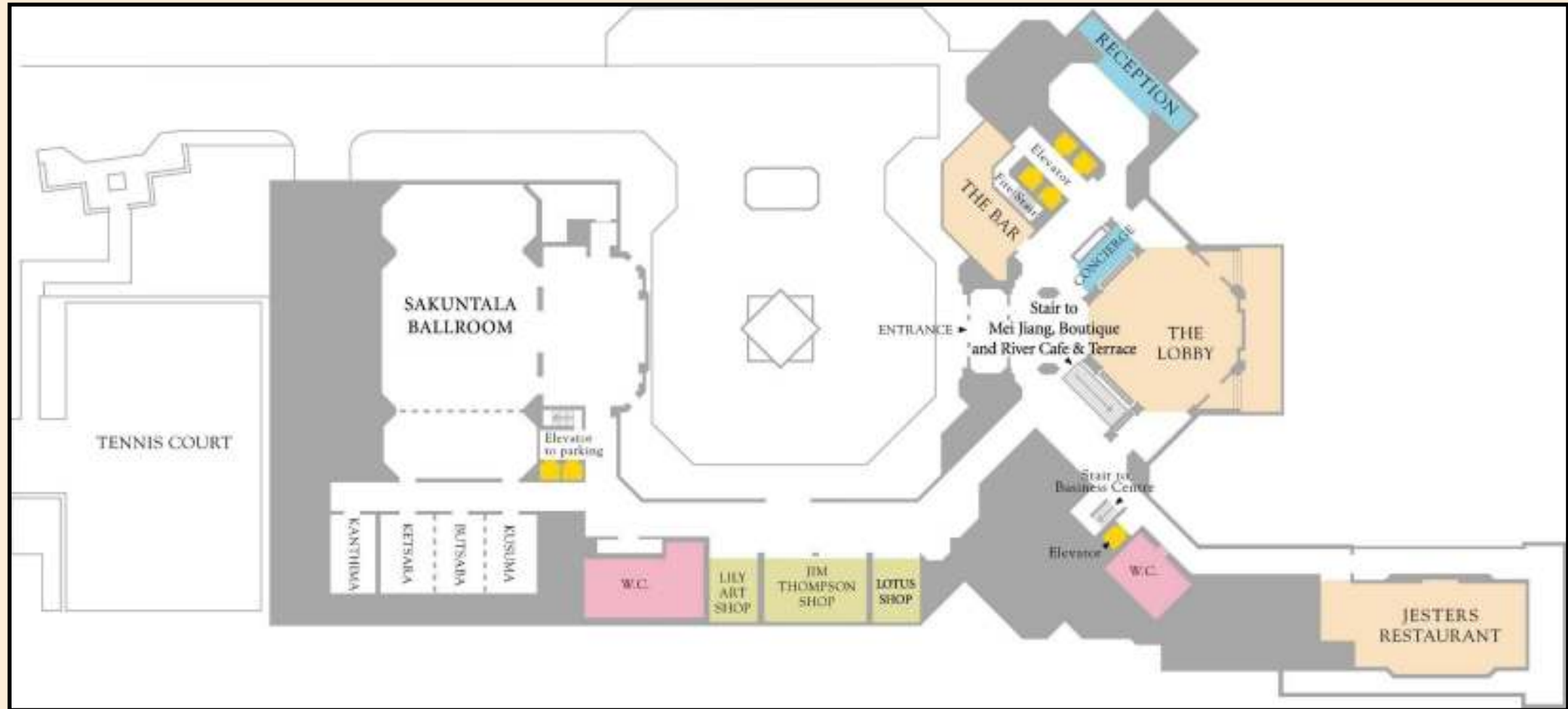
Hotel

Floor Plan

THE PENINSULA

B A N G K O K

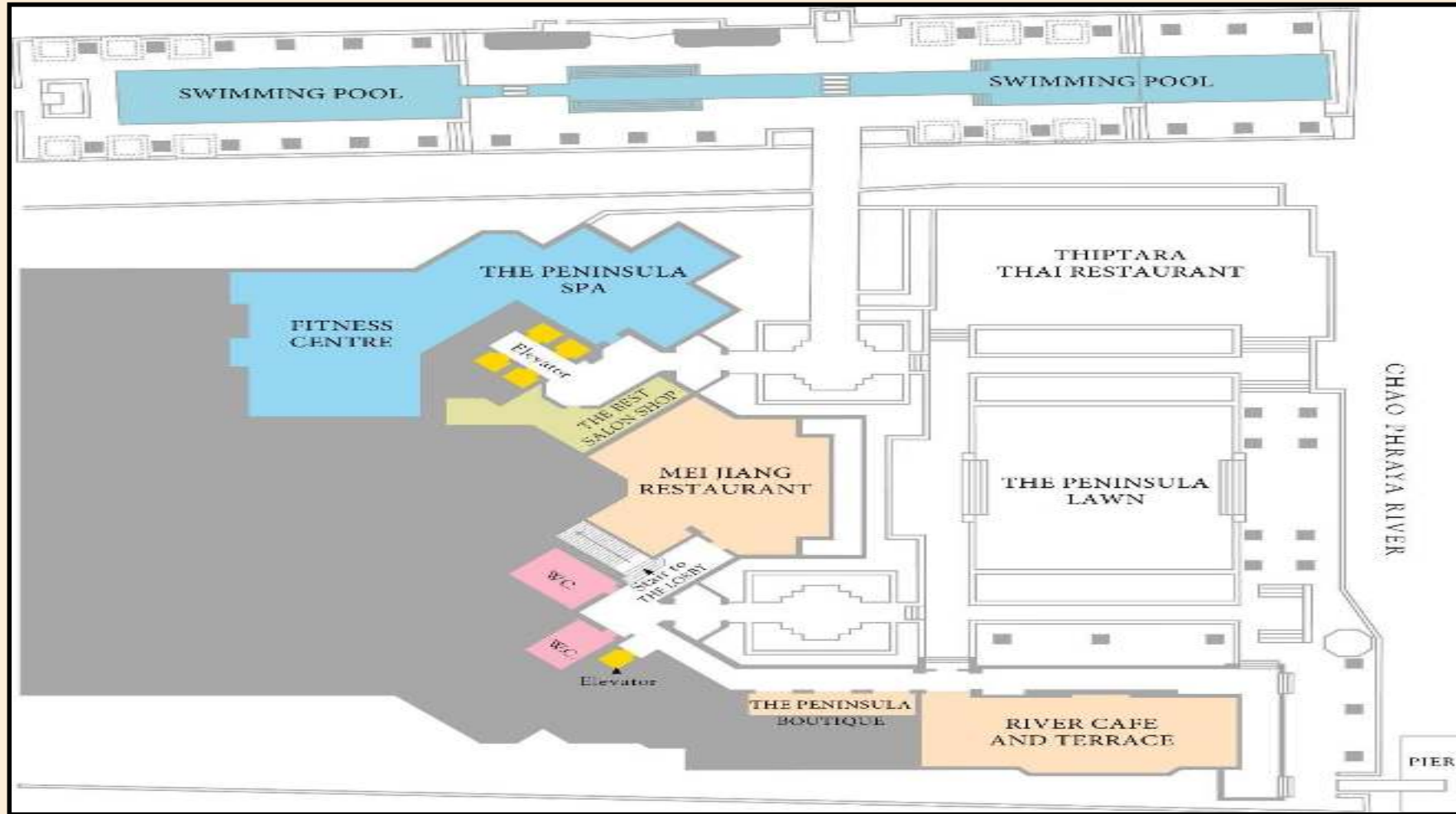
Lobby Floor Plan



THE PENINSULA

B A N G K O K

Ground Floor Plan



Hotel

Complimentary Activities

HEALTH & HARMONY

Yoga Class

Campaign period

- Every Saturday from March – December 2017

Activity highlights

- Sunrise Yoga exclusively at the riverfront in the Chinese Shrine of Gong Wu God
- Spiritual uplifting in the Chinese Shrine of Gong Wu God, which is the oldest Gong Wu God Shrine in Thailand
- Explore the local community in the Princess Mother Memorial Park to observe the so-called slow life of local people and visit the site which was the residence of Princess Mother (Somdej Ya)

Advance reservations are required. Guests can make a reservation with our Concierge by 5:00 pm Friday at the latest.



NAMASTE, BANGKOK'S RIVER SCENE

Yoga Class



Campaign period

- 6:00 am every Wednesday

Advance reservation required, limited to 12 persons per session on Wednesday.

FOOD OFFERING TO BUDDHIST MONKS

Tak-Bat



Campaign period

- Everyday (except Sunday) at 7:40 am in front of the hotel's spirit house

Activity highlights

- The Peninsula Bangkok adds Thai touches to your experience by arranging food offerings to monks, a ceremony called Tak Bart in Thai. This is a morning ritual and an act of sharing and giving by Thai Buddhists.

- Food items used as offerings from you to present to the monks will be arranged by our culinary team and available at your disposal with our complimentary.

Advance reservations are required. Guests can contact our Concierge by 5:00 pm today for tomorrow's activity.

Hotel

Recent Awards Won

THE PENINSULA

B A N G K O K



2002 - 2017



2016 - 2017

THE PENINSULA

B A N G K O K

Thank You

